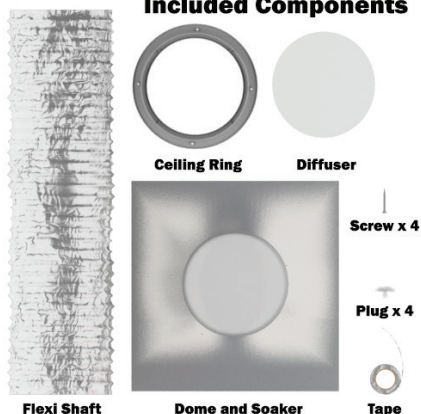


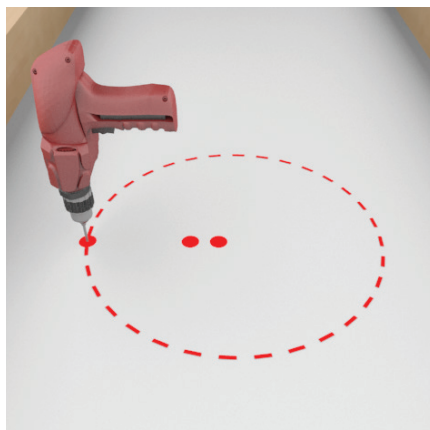
Installation Instructions for 300mm & 400mm Round Skylight Tile Roof

Included Components



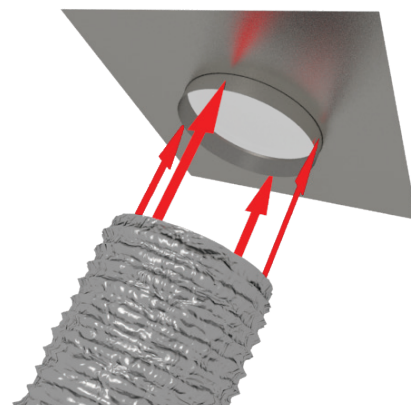
Tools Required for installation:

- Tape Measure
- Jigsaw or Plaster saw
- Small Angle Grinder with stone wheel
- Handsaw
- Cordless drill with phillips head piece (Star)
- Hammer
- Silicone gun and silicone
- Pencil or Marker
- Plaster knife (optional)
- Pliers (optional)

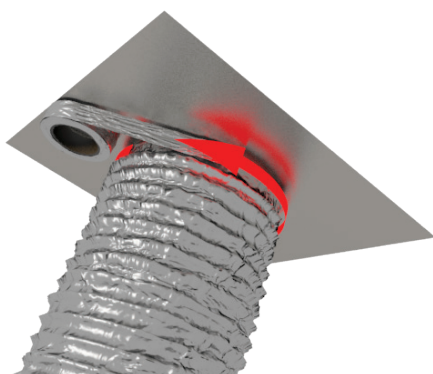


Using a drill, mark the edge of where the ceiling ring will be located in the ceiling.

Mark two more holes within the area to indicate direction.

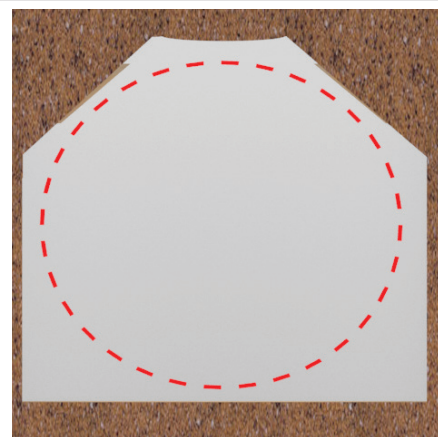
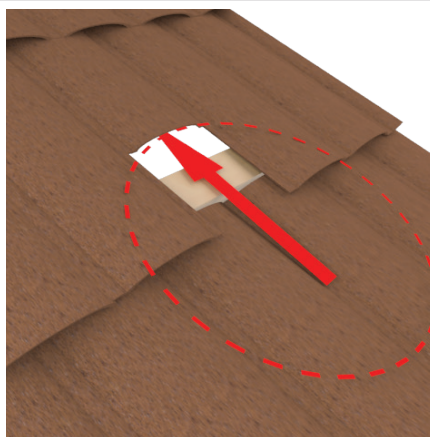


Slip the flexi shaft over the metal collar on the underside of the skylight dome.



Fix the flexi shaft to the collar on the underside of the dome using the aluminium tape provided.

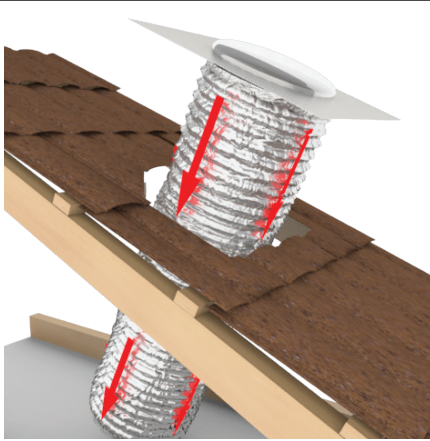
*Be sure to save some tape for the ceiling ring at a later stage.



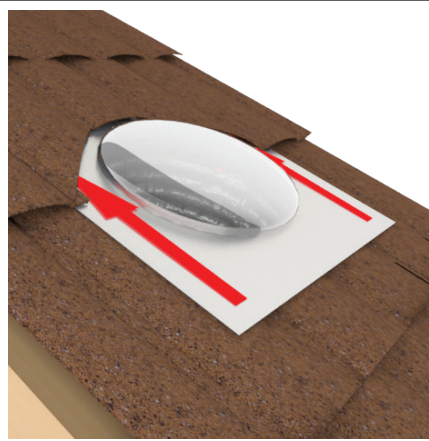
Due to varying tile sizes, some installs can simply remove tiles while others require tiles to be cut. In most situations, tiles can be slipped up under higher tiles to save some cutting.

Select location above ceiling ring that best suits your install situation.

Remove tiles or cut tiles with small angle grinder. Battens can be cut through.



Drop flexi shaft through the opening in the roof sheathing.



Slide dome and soaker tray up under the top tiles.

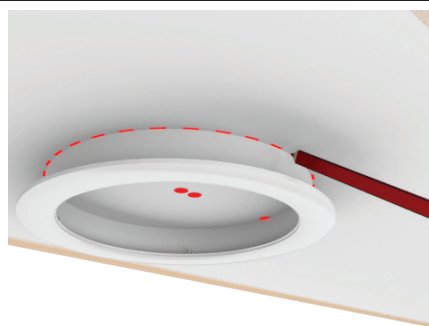
Rest Dome and Soaker on tiles.



Using a hammer or rubber mallet, gently form the edges of the tray to match the roof profile.



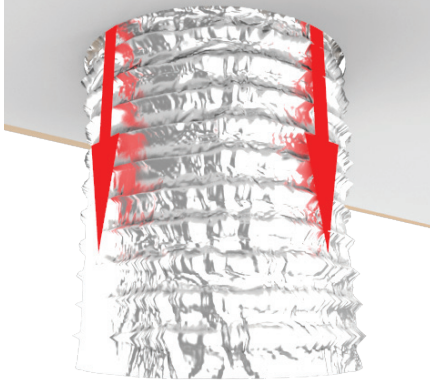
Use silicone to seal under edges of tray to roof sheathing.



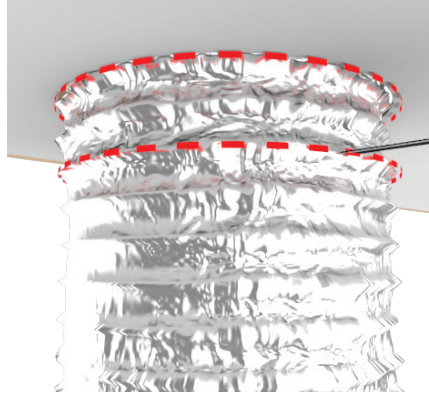
From ground level (looking up at ceiling) locate the original hole for positioning ceiling ring. Hold ceiling ring to ceiling with hole in dead centre. Trace the outside of the collar with a marker.



Using a plaster knife or jigsaw, cut out the plaster circle and remove.

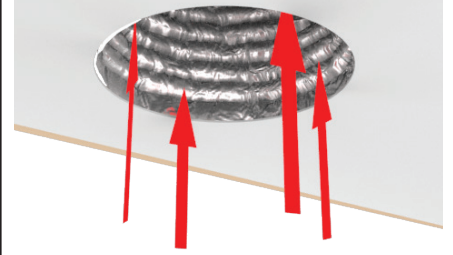


Pull excess flexi shaft through hole in ceiling.

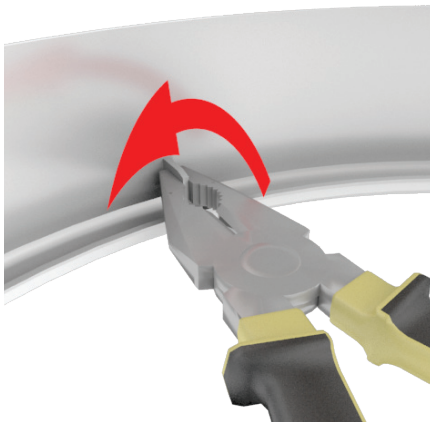


Cut off excess flexi duct 2 ribs below ceiling level.

Dispose of excess flexi duct.



Push hanging flexi shaft back up into roof cavity.



For non ventilated skylights: Using pliers, grip and twist white molded tabs inside ceiling ring to snap off.

For vented skylight: Leave white molded tabs in place.



Using cordless drill, fix ceiling ring to ceiling with screws provided.



Position flexi shaft on inside of ceiling ring collar at ceiling level.



Attach flexi shaft to inside of ceiling ring collar with aluminium tape provided.



Gently bend the diffuser panel to allow access through ceiling ring.

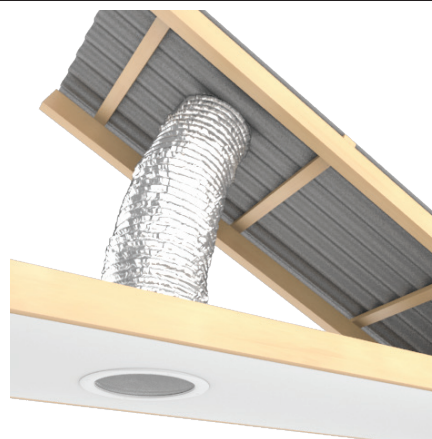


Let diffuser panel rest flat in ceiling ring.

Face prisms down for maximum light efficiency.



Install white plugs provided into the screw holes in ceiling ring to finish off.



Enjoy your skylight.