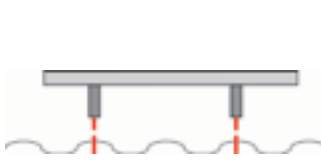


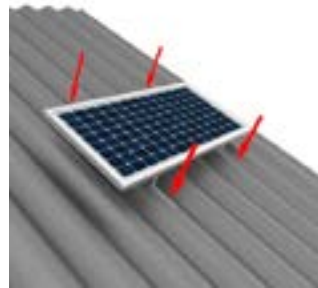
Installation Instructions for
Solar Light 300mm² & 450mm
CORRUGATED IRON ROOF



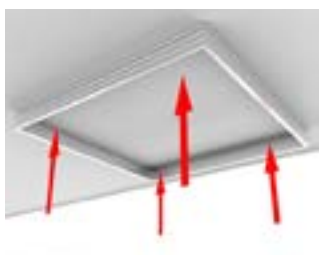
Decide on a roof location that will expose the Solar Panel to as much sunlight as possible.



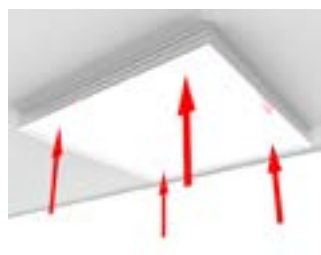
Space & attach brackets to Solar Panel so they align with the peak of Corrugations.



Attach brackets to the roof with screws. Seal under the screws. Run cable under ridge cap and into roof cavity.

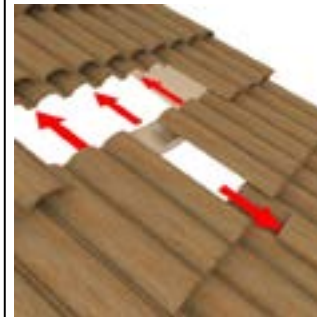


Unclip light diffuser from frame and mount frame to ceiling using fixings provided. Drill 12mm hole and feed cable through.



Connect cable to light diffuser and clip light diffuser into frame.

Installation Instructions for
Solar Light 300mm² & 450mm
TILE ROOF



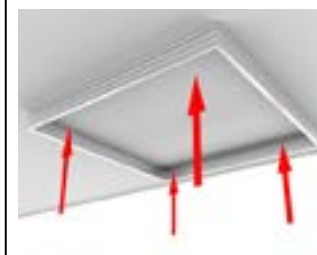
Decide on a roof location that will expose the Solar Panel to as much sunlight as possible.



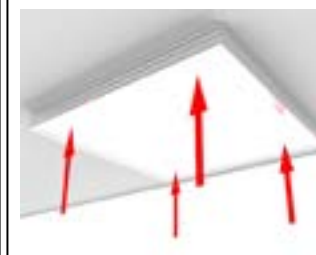
Space & attach brackets to Solar Panel so they align with the peak of Corrugations.



Attach brackets to the roof with screws. Seal under the screws. Run cable under ridge cap and into roof cavity.



Unclip light diffuser from frame and mount frame to ceiling using fixings provided. Drill 12mm hole and feed cable through.



Connect cable to light diffuser and clip light diffuser into frame.